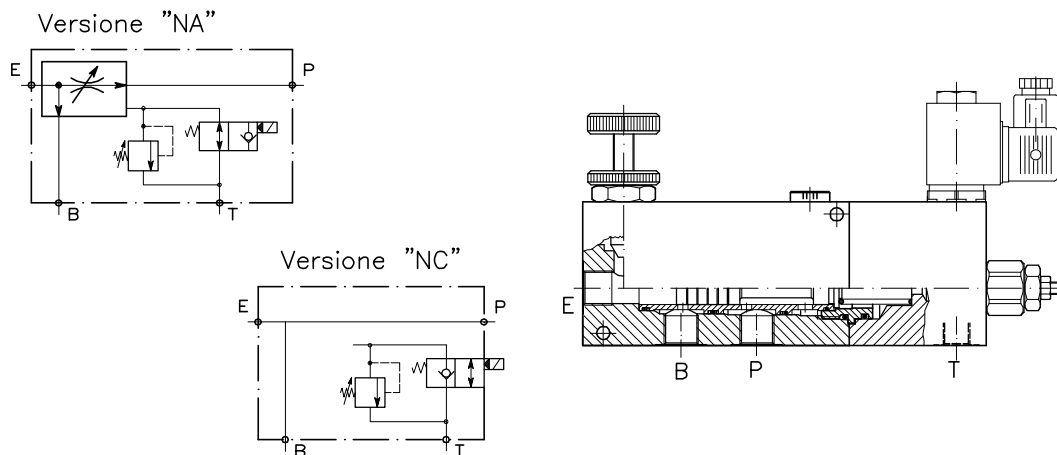


# VRF-3V+VMP+VMS-...

REGOLATORE DI FLUSSO PRIORITARIO CON BY-PASS PILOTATO  
(MARTELLINO IDRAULICO)

PRIORITY FLOW CONTROL, HAMMER VERSION



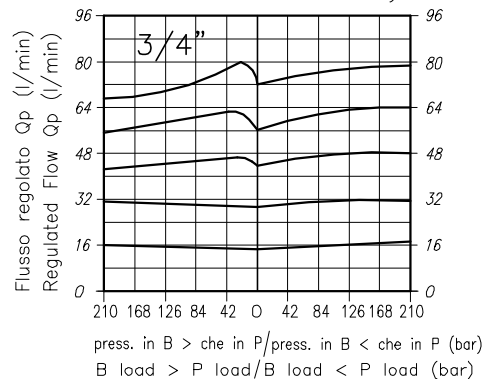
## CARATTERISTICHE

Luce nominale	
Portata max in entrata	<b>150 l/min - 40 GPM</b>
Pressione di lavoro max.	<b>350 bar - 5075 PSI</b>
Temperatura ambiente	<b>-30°C + 50°C</b>
Temperatura olio	<b>-30°C + 80°C</b>
Filtraggio consigliato	<b>50 micron</b>
Peso	<b>6.560 Kg, 3/4" GAS</b>

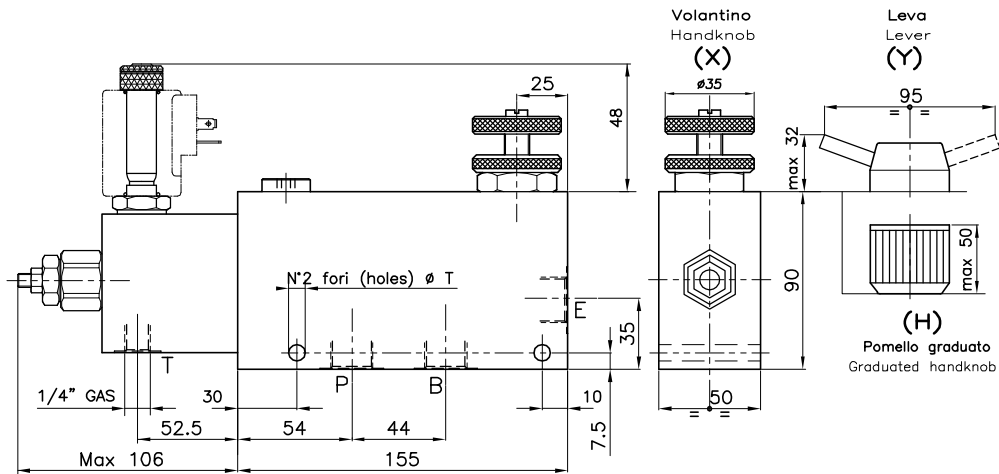
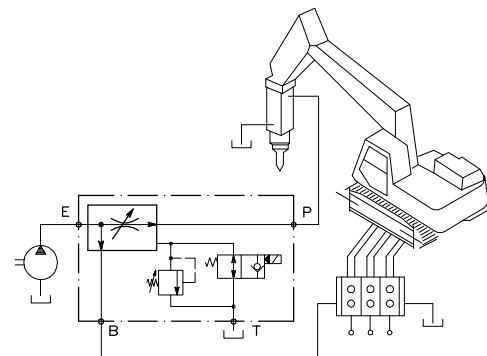
## PERFORMANCE

Rated size
Inlet flow rate
Max working pressure
Room temperature
Oil temperature
Recommended filtration
Weight

Viscosita' olio 46 cSt a 50°C — Oil viscosity 46 cSt at 50°C



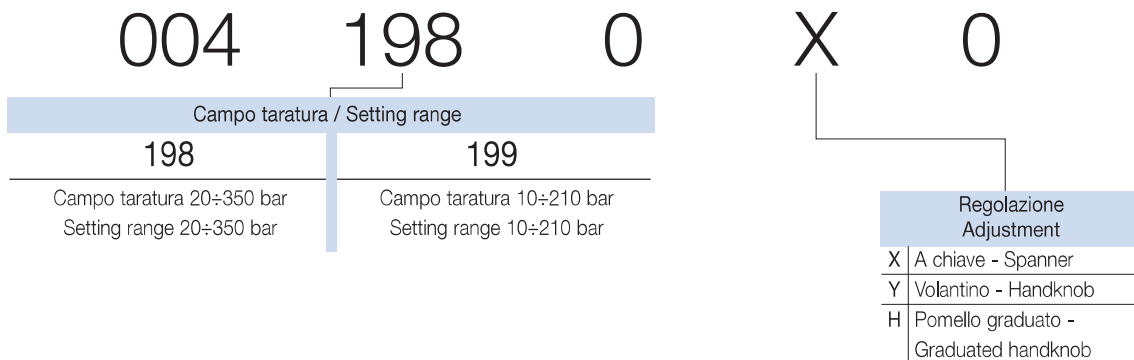
Viscosità olio 46 cSt a 50°C  
Oil viscosity 46 cSt at 50°C


**ESEMPIO TIPOICO DI CIRCUITO  
TYPICAL CIRCUIT EXAMPLE**

**DIMENSIONI  
DIMENSIONS**

Campo taratura Setting range	Attacchi Port size E-P-B GAS (BSPP)	QP l/min - GPM	QE l/min - GPM
198   199	3/4"	90-23.8	150-39.6

QE = Portata max in entrata "E" - l/min  
QE = Max admitted inlet flow "E" - l/min

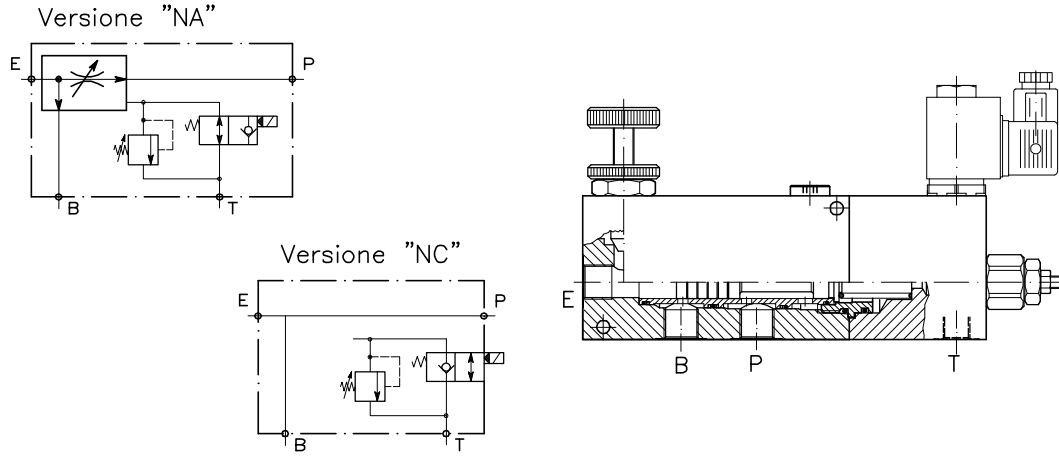
QP = Portata max in uscita prioritario "P" - l/min  
QP = Max delivery in priority "P" - l/min

**CODICE DI ORDINAZIONE  
HOW TO ORDER**


# VRF-3V+VMP+VMS-...

REGOLATORE DI FLUSSO PRIORITARIO CON BY-PASS PILOTATO  
(MARTELLO IDRAULICO)

PRIORITY FLOW CONTROL, HAMMER VERSION

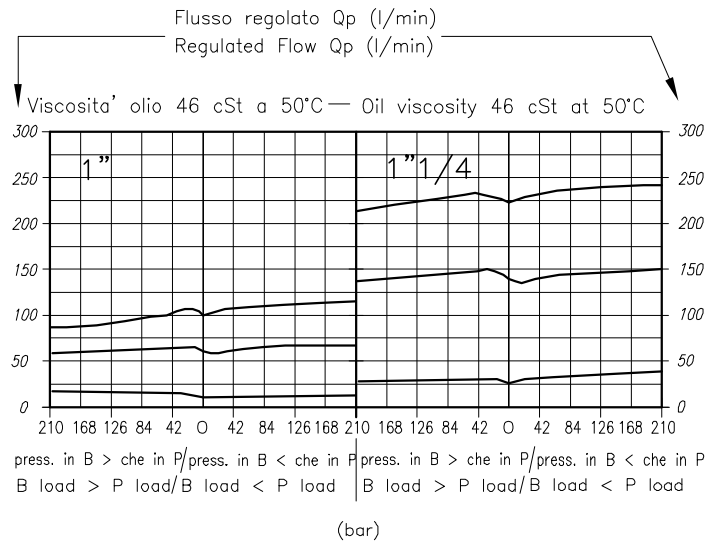


## CARATTERISTICHE

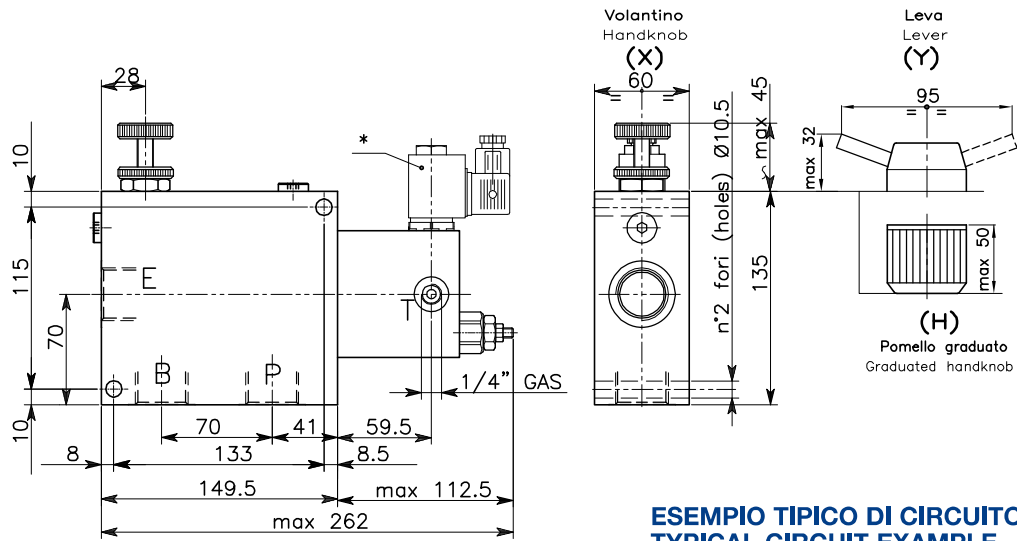
Luce nominale	
Portata max in entrata	<b>250/400 l/min - 66/105 GPM</b>
Pressione di lavoro max.	<b>350 bar - 5075 PSI</b>
Temperatura ambiente	<b>-30°C + 50°C</b>
Temperatura olio	<b>-30°C + 80°C</b>
Filtraggio consigliato	<b>50 micron</b>
Peso	<b>10.641 Kg. 1" GAS</b>
Peso	<b>10.151 Kg. 1/4" GAS</b>

## PERFORMANCE

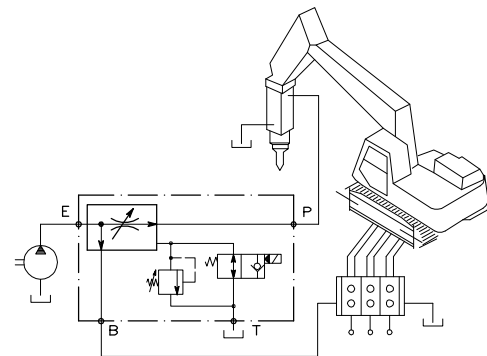
Rated size
Inlet flow rate
Max working pressure
Room temperature
Oil temperature
Recommended filtration
Weight
Weight



**Viscosità olio 46 cSt a 50°C**  
**Oil viscosity 46 cSt at 50°C**



**ESEMPIO TIPICO DI CIRCUITO**  
**TYPICAL CIRCUIT EXAMPLE**



**DIMENSIONI**  
**DIMENSIONS**

Campo taratura Setting range		Attacchi Port size E-P-B GAS (BSPP)	QP l/min - GPM	QE l/min - GPM
200	201	1"	150-39.8	250-66
202	203	1" 1/4"	250-66	400-105.8

**QE = Portata max in entrata "E" - l/min**  
**QE = Max admitted inlet flow "E" - l/min**

**QP = Portata max in uscita prioritario "P" - l/min**  
**QP = Max delivery in priority "P" - l/min**

**CODICE DI ORDINAZIONE**  
**HOW TO ORDER**

004      200      0      X      0

Campo taratura / Setting range	
200	201
202	203
Campo taratura 20÷350 bar Setting range 20÷350 bar	Campo taratura 10÷210 bar Setting range 10÷210 bar

Regolazione Adjustment	
X	A chiave - Spanner
Y	Volantino - Handknob
H	Pomello graduato - Graduated handknob